

IES-2042FX Series



ORing WEB-site



Industrial 6-port lite-managed Ethernet switch with 4x10/100Base-T(X) and 2x100Base-FX Series

Features

- World's fastest Redundant Ethernet Ring: O-Ring (recovery time < 30ms over 250 units of connection)
- O-Chain allow multiple redundant network rings
- Provided Fast recovery technology for Ethernet multi-redundancy
- Support STP/RSTP standard redundant protocol
- SNMP v1/v2c/v3, http server, telnet server support
- Support LLDP protocol
- Web-based interface, telnet server and Windows utility (Open-Vision) configuration
- Event notification through Syslog, Email, SNMP trap and relay
- Two 100Base-FX fiber ports support for long distance connection
- Rigid IP-30 housing design
- DIN-Rail and wall mounting enabled



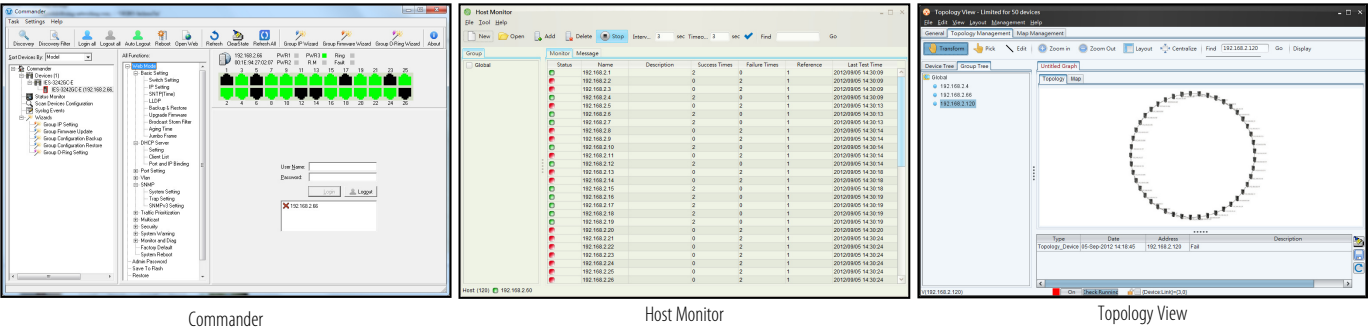
Introduction

IES-2042FX series are lite-Managed Redundant Ring Ethernet switches with 4x10/100Base-T(X) and 2x100Base-FX ports. With completely support of Ethernet Redundancy protocol, O-Ring (recovery time < 30ms over 250 units of connection), O-Chain and STP/RSTP (IEEE802.1w/D) can protect your mission-critical applications from network interruptions or temporary malfunctions with its fast recovery technology. IES-2042FX series can be managed centralized and convenient by a powerful windows utility — Open-Vision. In addition, the wide operating temperature range from -40°C to 75°C can satisfy most of operating environment. Therefore, these switches are one of the most reliable choice for easy managed Fiber Ethernet application.

- **O-Ring:** O-Ring is ORing's proprietary redundant ring technology, with recovery time of less 30 milliseconds and up to 250 nodes. The O-Ring redundant ring technology can protect mission-critical application from network interruptions or temporary malfunction with its fast recover technology.
- **O-Chain:** O-Chain is the revolutionary network redundancy technology that provides the add-on network redundancy topology for any backbone network, O-Chain allows multiple redundant network rings of different redundancy protocols to join and function together as a larger and more robust compound network topology. O-Chain providing ease-of-use while maximizing fault-recovery swiftness, flexibility, compatibility, and cost-effectiveness in one set of network redundancy topology.

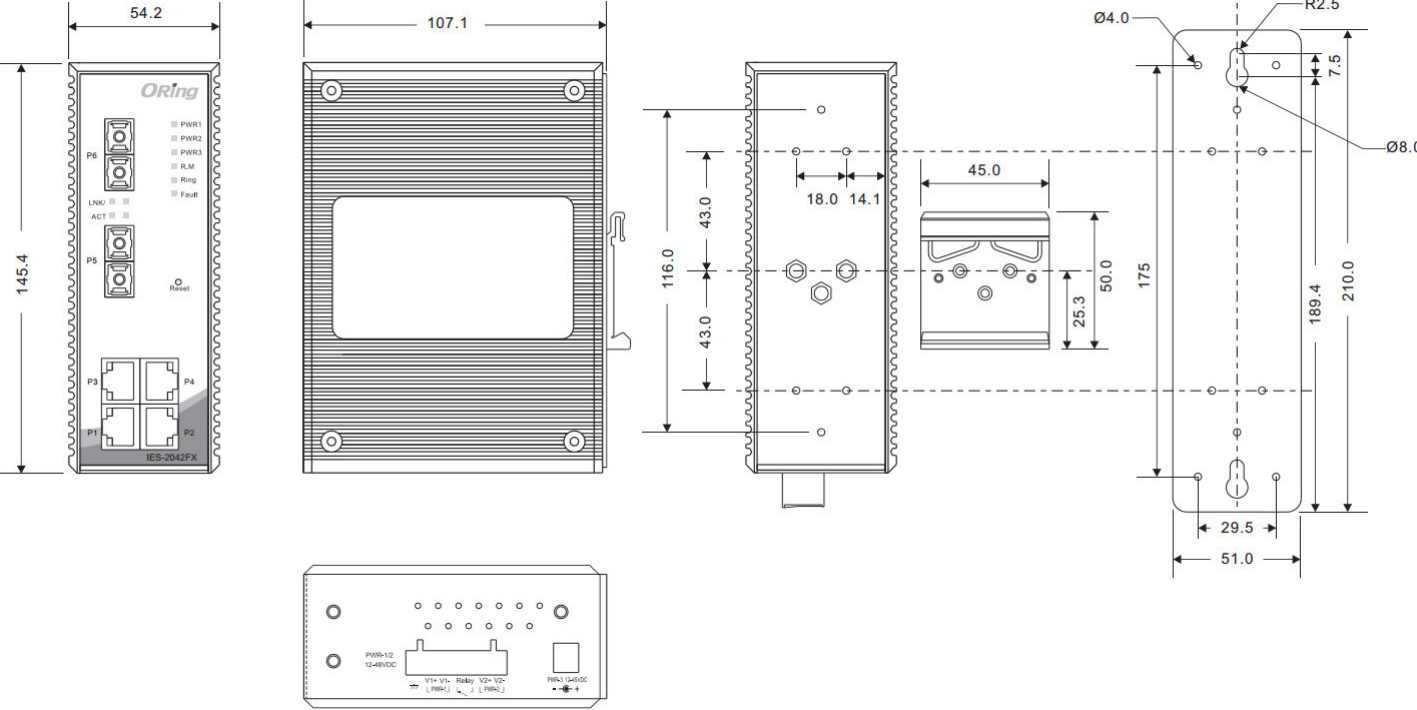
Open-Vision

ORing’s switches are intelligent switches. Different from other traditional redundant switches, ORing provides a set of Windows Utility (Open-Vision) for user to manage and monitor all industrial Ethernet switches on the industrial network.



Dimensions

Unit = mm (Tolerance ± 5mm)



Specifications

ORing Switch Model		IES-2042FX-MM-SC	IES-2042FX-SS-SC
Physical Ports			
10/100Base-T(X) Ports in RJ45 Auto MDI/MDIX		4	4
Fiber Ports Specifications	Fiber Ports Number	2	2
	Fiber Ports Standard	100Base-FX	100Base-FX

	Fiber Mode	Multi-mode		Single-mode
	Fiber Diameter (μm)	62.5/125 μm 50/125 μm		9/125 μm
	Fiber Optical Connector	SC		SC
	Typical Distance (km)	2 Km		30 Km
	Wavelength (nm)	1310 nm		1310 nm
	Max. Output Optical Power (dBm)	-14 dbm		-8 dbm
	Min. Output Optical Power (dBm)	-23.5 dbm		-15 dbm
	Max. Input Optical Power (Saturation)	0 dbm		0 dbm
	Min. Input Optical Power (Saturation)	-31 dbm		-34 dbm
	Link Budget (dB)	7.5 db		19 db
Technology				
Ethernet Standards	IEEE 802.3 for 10Base-T IEEE 802.3u for 100Base-TX IEEE 802.3x for Flow control IEEE 802.1D for STP (Spanning Tree Protocol) IEEE 802.1w for RSTP (Rapid Spanning Tree Protocol) IEEE 802.1AB for LLDP (Link Layer Discovery Protocol)			
MAC Table	1K			
Packet Buffer Size	1Mbits			
Processing	Store-and-Forward			
Switch Properties	Switching latency: 5.05 μs		Switching latency: 7.45 μs	
	Switching bandwidth: 1.2Gbps			
	Throughput (packet per second): 892.8Kpps@64Bytes packet			
	VLAN: Port based			
Security Features	Enable/disable ports VLAN to segregate and secure network traffic			
Software Features	STP/RSTP (IEEE 802.1D/w) Redundant Ring (O-Ring) with recovery time less than 30ms over 250 units DHCP Client Port Base VLAN LLDP (Link Layer Discovery Protocol) Port configuration, status, statistics, monitoring, security SNMP v1/v2c/v3 and private MIB support			
Network Redundancy	O-Ring O-Chain Fast recovery RSTP/STP			
LED Indicators				
Power Indicator (PWR)	Green: Power LED x 3			
Ring Master Indicator (R.M.)	Green: Indicates that the system is operating in O-Ring Master mode			
O-Ring Indicator (Ring)	Green: Indicates that the system operating in O-Ring mode Green Blinking: Indicates that the Ring is broken.			
Fault Indicator (Fault)	Amber: Indicate unexpected event occurred			
10/100Base-T(X) RJ45 Port Indicator	Green for Link/Act indicator: On for link-up, Off for link-down, Blinking for act. Amber for Link indicator: On for link-up, Off for link-down.			
100Base-FX Fiber Port Indicator	Green for Link/Act indicator: On for link-up, Off for link-down, Blinking for act. Amber for Link indicator: On for link-up, Off for link-down.			
Fault Contact				
Relay	Relay output to carry capacity of 1A at 24VDC			

Reset Function		
Reset Button	< 5 sec: System reboot, > 5 sec: Factory default	
Power		
Redundant Input Power	Triple DC inputs. 12~48VDC on 7-pin terminal block, 12~45VDC on power jack	
Power Consumption (Typ.)	≤7Watts, 12VDC/0.55A (7W), 24VDC/0.27A (6W), 48VDC/0.16A (7W) ≤6Watts, 12VDC/0.48A (6W), 24VDC/0.24A (6W), 48VDC/0.14A (6W)	
Overload Current Protection	Present	
Reverse Polarity Protection	Present on terminal block	
Physical Characteristic		
Enclosure	IP-30 Aluminum	
Dimension (W x D x H)	54.2 (W) x 107.1 (D) x 145.4 (H)mm 2.13 (W) x 4.22 (D) x 5.72 (H) inch	
Weight (g)	670 g	670 g
Environmental		
Storage Temperature	-40 to 85°C (-40 to 185°F)	
Operating Temperature	-40 to 75°C (-40 to 167°F)	
Operating Humidity	5% to 95% non-condensing	
Regulatory Approvals		
EMC	CE EMC (EN 55035, EN 55032), FCC Part 15 B	
EMI	EN 55032, CISPR32, EN 61000-3-2, EN 61000-3-3, VCCI class A, C-Tick class A, FCC Part 15 B class A	
EMS	EN 55035 (IEC/EN 61000-4-2 (ESD), IEC/EN 61000-4-3 (RS), IEC/EN 61000-4-4 (EFT), IEC/EN 61000-4-5 (Surge), IEC/EN 61000-4-6 (CS), IEC/EN 61000-4-8(PFMF), IEC/EN 61000-4-11 (DIP))	
Shock	IEC60068-2-27	
Free Fall	IEC60068-2-31	
Vibration	IEC60068-2-6	
Safety	EN 62368-1 (LVD), UL 61010-1, UL 61010-2-201	
MTBF	595597.3384 hrs.	609551.4207 hrs.
Warranty	5 years	

Ordering Information

Available Model	Model Name	Description
	IES-2042FX-MM-SC	Industrial 6-port lite-managed Ethernet switch with 4x10/100Base-T(X) and 2x100Base-FX, multi-mode, 2Km/1310nm, SC connector
	IES-2042FX-SS-SC	Industrial 6-port lite-managed Ethernet switch with 4x10/100Base-T(X) and 2x100Base-FX, single-mode, 30Km/1310nm, SC connector
Packing List <ul style="list-style-type: none">IES-2042FX Series x 1Wall-mount Kit x 1ORing Tool CD x 1Quick Installation Guide x 1		Optional Accessories <ul style="list-style-type: none">Open-Vision M500: Powerful Network Management Windows Utility Suit, 500 IP devicesSDR/NDR Series DIN-Rail power supply